

BOWENS CREEK PARK DAY USE REGULATIONS

Welcome to **Bowens Creek!** The Corps of Engineers hopes you have a safe and enjoyable visit, and we ask your observance of the following regulations and policies:

1. **Alcoholic beverages and firearms are prohibited in all park areas; coolers may be searched.** Rules and regulations governing public use of Corps of Engineers Water Resources Development Projects are posted throughout park areas and copies are available from any Park Ranger. Please observe all park policies. **All regulations and policies are strictly enforced.**

2. **Day Use Fees** All fees are **NON-REFUNDABLE**

*1 vehicle	\$5.00
*Walk-ins -	\$2.00
*Children under the age of 16	No charge

You will be issued a day use fee receipt and a day pass to be displayed as directed by the park attendant. Day use passes should be returned to the park attendant upon departure or at the 9 PM park closure time.

3. **Visitors are required to remove all trash, equipment, and supplies before vacating the park.**

Please dispose of all your trash in trashcans located throughout the park. You are encouraged to deposit aluminum cans in the bins provided.

4. **Fires must be confined to the designated fire grills.**

Extinguish all fires and burning embers when picnic site is unattended or vacated.

5. **Swim at your own risk in our designated swim areas at the Bowens Creek beach.** Life jackets are recommended and available for use at the park. Please do not sit, stand or climb on any buoy, depth marker or navigational aid.
6. **Jumping, diving, sunbathing or fishing from the Boat Dock is not permitted.** Please use designated swimming and fishing areas.
7. **All pets must be on a leash no longer than six feet.** Pets are not permitted on swim beaches or in designated swim areas. Please remove and dispose of animal waste.
8. **The use of profane and offensive language is not permitted.** Visitors engaging in disruptive behavior will be asked to leave the park.
9. **Please observe the maximum safe speed of 10 mph.** Careful driving in the park will insure the safety of all visitors and wildlife.
10. **Park management reserves the right to close the park for public safety.** Heavy visitation may make it necessary to temporarily close the park. During those times, no additional visitors will be admitted. If a visitor leaves the park, or is an annual pass holder, there is no guarantee of immediate re-entry.

Violations of any park rules or regulations may result in citations and fines.

The gate at Bowens Creek Park is locked between the hours of 9 PM and 8 AM (May -September). Park Attendants are in the gatehouse from 8 AM – 9 PM.

**Philpott Lake
Visitor Center
1058 Philpott Dam Road
Bassett, VA 24055
(276) 629-2703**

email: philpott@usace.army.mil

[www.saw.usace.army.mil/Locations/
DistrictLakesandDams/Philpott.aspx](http://www.saw.usace.army.mil/Locations/DistrictLakesandDams/Philpott.aspx)
www.CorpsLakes.us

Updated 2016

Bowens Creek Park Map

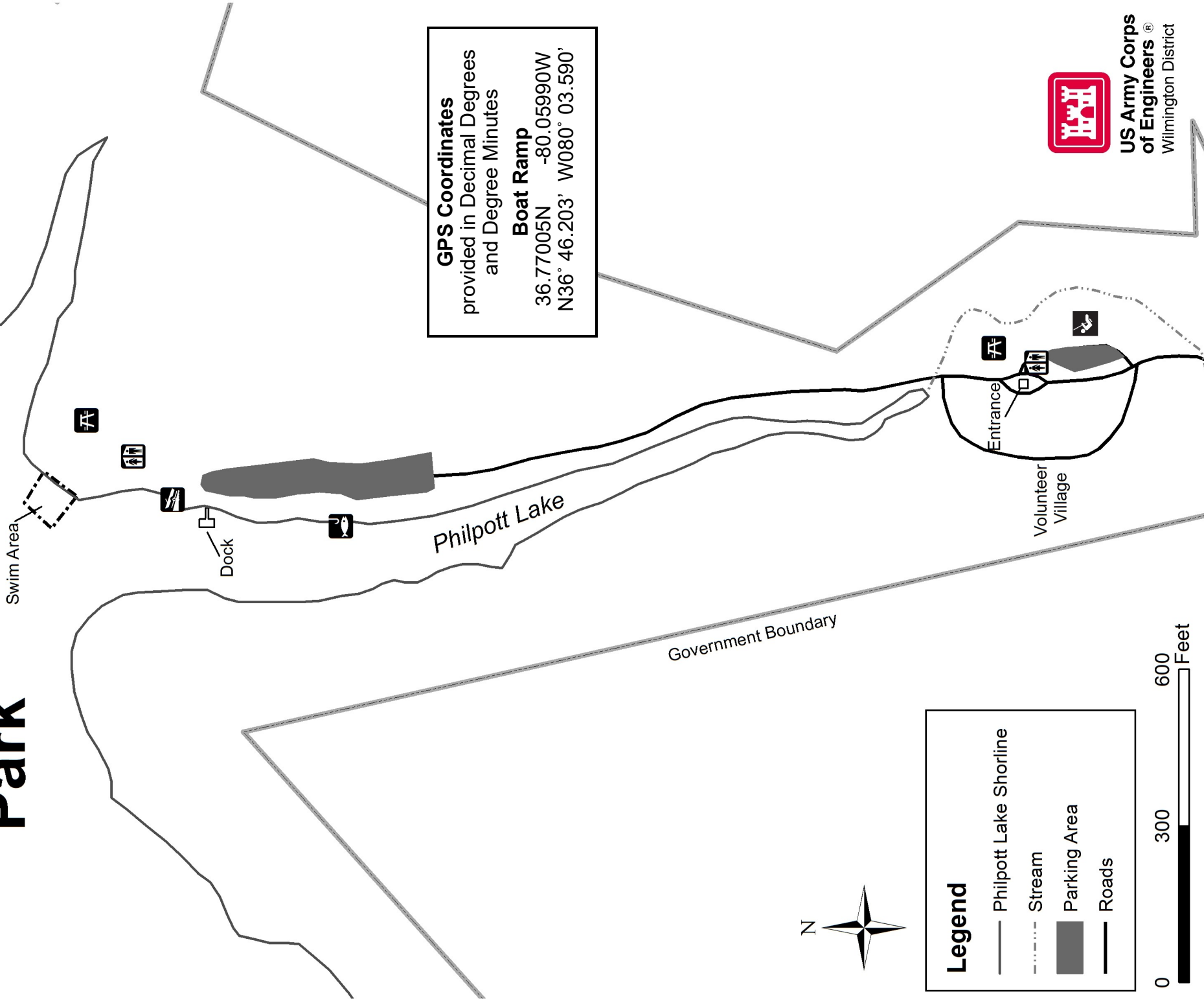
Philpott Lake
605 Bowens Ck. Rd.
Bassett, VA 24055
(276) 629-4104

Henry County



**US Army Corps
of Engineers** ®
Wilmington District

Bowens Creek Park



GPS Coordinates
provided in Decimal Degrees
and Degree Minutes

Boat Ramp
36.77005N -80.05990W
N36° 46.203' W080° 03.590'

Legend

- Philpott Lake Shoreline
- Stream
- Parking Area
- Roads



**US Army Corps
of Engineers**
Wilmington District